

Sports System Upgrades, Simplified

OLM[®] Technology for Crafting
Spectacular Game Experiences

www.ikioledlighting.com





**Sports System
Upgrades, Simplified**

OLM® Technology for Crafting
Spectacular Game Experiences

Engineering Unforgettable Game Moments

Precision Sports Lighting for Maximum
Performance and Immersive Experience

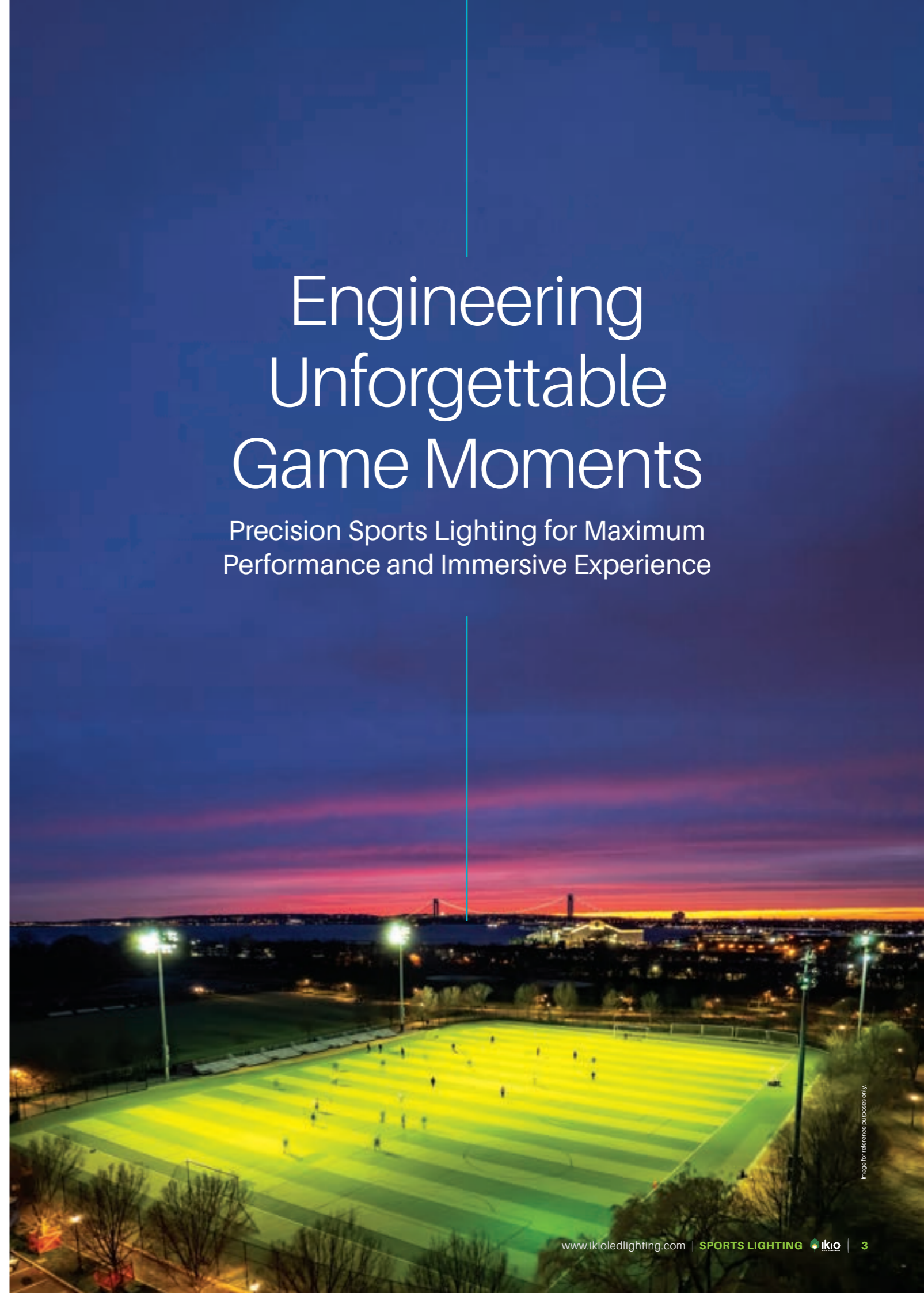


Image for reference purposes only.



Streamlining Your Sports System Upgrades with OLM[®] Solutions

Operational downtime, installation hassles, and quality issues remain persistent concerns for venue owners, who worry about exceeding their budget to achieve an efficient system upgrade.

Utilizing 30+ years of experience in lighting, IKIO brings Optimum Light Management (OLM) solutions to your fields. OLM-powered systems incorporate the best of LED technology, combining them with guided lighting and glare mitigation system to deliver comprehensive, efficient upgrades.

The Results?

Optimized Field Visibility for Improved Game Experience

Precision engineering, strategic fixture placement, and advanced optics ensure uniform light levels, enabling seamless ball tracking and crisp, clear visuals on the field.

Lower Energy Consumption Due to Enhanced Efficiency

Lighting systems lean on IKIO's high-performance luminaires to manage output precisely, reducing energy consumption by up to 70%.

Ease of Maintenance with Significantly Reduced Costs

Powered by external drivers, the systems facilitate streamlined maintenance with quick driver replacements and diagnostics, eliminating the need for frequent fixture access.

Maximized Savings from Efficient Fixture Integration

OLM upgrades offer cost-efficiency by utilizing existing poles and easy-to-install fixtures, eliminating the need for complete overhaul and significantly reducing installation costs.

Durable Performance and Long-Term System Reliability

Engineered with robust materials, advanced thermal management, and low EPA designs, these systems ensure lasting and reliable performance in harsh conditions.

Our OLM[®] Solutions Are Backed By:



Parts and Labor Warranty:
No Maintenance Costs for Up to 25 Years.



End-to-End Services:
Photometrics, Preliminary Audits, Prototyping, and More.



24x7 Support:
Dedicated Project Personnel and After-Project Support Team.

*Terms and Conditions Apply

OLM® System Upgrade for Retrofit & New Projects



1
Cross Arm/Support Structure
Existing support structure is replaced with Tier-1 quality support arms (top mount or flood mount).

3
Pole Top Mounting, LED Fixture, & Shield
OLM® Technology with multifaceted optics and glare control design for precise illumination.

2
Remote Electrical Component Enclosure and Mounting Hardware
All the driver and electrical components are concentrated in the distribution box, making it convenient for maintenance, saving maintenance costs, and providing higher security.

4
Safety Wire with Electrical Isolation
Opto-electrical separation design to reduce material costs.

5
Custom Pole Structure
Pole configured for project-specific application and optimal luminaire positioning.

OLM® System Upgrade for Retrofit & New Projects

Retrofit Solutions

Designed to make the upgrade as seamless and cost-effective as possible. After conducting a thorough structural assessment, we replace the existing fixtures and add new wire harnesses and electrical component enclosure as needed. Retrofitting maintains the structural integrity of the current setup while upgrading it for enhanced system performance.

New Build Solutions

Providing complete systems with lighting, electrical, and structural components engineered to work together. This includes pole installation, fixture placement, and full system integration. We offer accessories (poles, mounts, etc.) as a complete package to ensure efficient project completion.

- 1** Glare and Spill Mitigation Design for Better On-Field Lighting
- 2** AeroTrack System to Enhance Visibility for Aerial Sports
- 3** Centralized Electrical Components Enclosure with External Driver
- 4** Optimized Load Distribution to Maintain Structural Integrity & Stability



Engineered for Ultimate Safety, Stability, and Performance

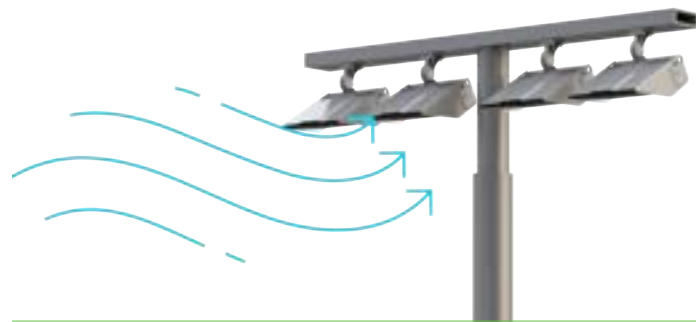
Low EPA Design for Reduced Wind Load
1.55 ft² EPA



Durability to Withstand Harsh Conditions
IP66 All-Weather Protection



Superior WSR for Maximum Wind Resistance
1.2 mph Wind Shear Rating



Better Glare Reduction Efficiency Than Standard Fixtures

GlareX $GR \leq 10$

Standard Lights $GR \leq 50$



AeroTrack System for Performance-Critical Environments



Facilitates precise tracking of aerial balls, reducing eye strain and optimizing visual clarity. The system prevents ball loss from over-illumination, ensuring continuous visibility and safe play for athletes.

Brighter Stage for Student Athletes

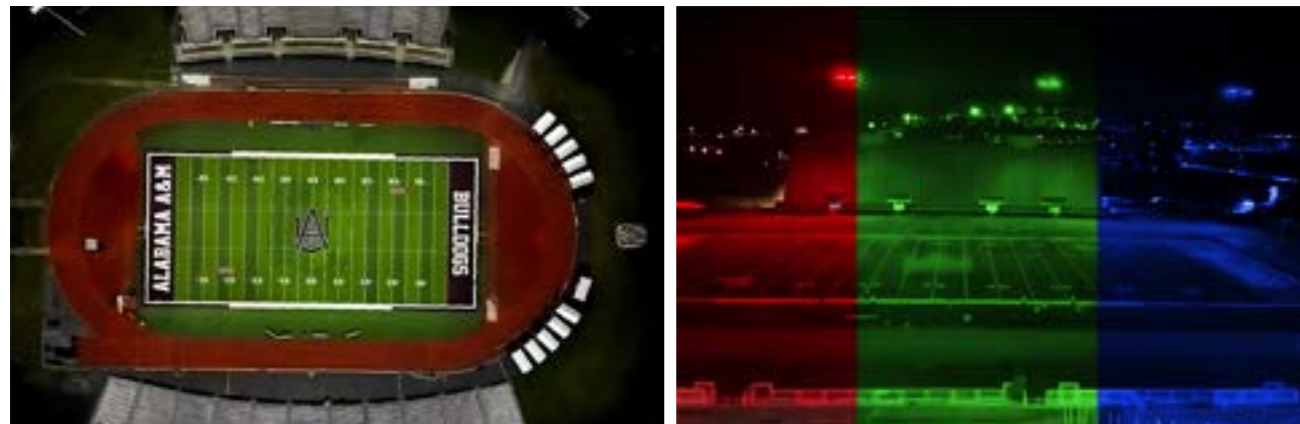
Louis Crews Stadium, A&M University, Alabama

Alabama A&M University modernized its Louis Crews Stadium with OLM™ and DMX-enabled lighting to achieve NCAA-grade illumination. The system enhances player visibility and fan experience while introducing programmable lighting scenes.

Challenge: The university needed a high-performance, broadcast-ready solution that improved visibility and reduced energy consumption, all without impacting stadium operations.

Resolution: Deployed a turnkey retrofit using OLM™ floodlighting with DMX-compatible smart controls. Delivered uniform, true-color illumination, enabling HD/4K-ready broadcast quality.

- ✓ **493,257.6 kWh/Yr**
Annual Energy Savings
- ✓ **\$54,554.29**
Annual Cost Savings
- ✓ **154**
Fixtures Commissioned
- ✓ **50.9%**
Improved Lighting Levels



Customer Review

Upgraded lighting has improved everything from player visibility to audience experience. The brighter, more consistent lighting and added color features have taken our events to the next level.
— Facilities Director, Alabama A&M University



Game-Ready Lighting, Every Night

Bolton High School, Arlington, Tennessee

Soccer Field | Baseball Field | Softball Field | Tennis Field

Bolton High School upgraded its athletic and community zones with modern LED lighting designed for clarity, control, and comfort. The new system supports flexible scheduling, improved field visibility, and reduced maintenance.

Challenge: Existing lighting system struggled to meet the growing needs of evening athletics and community events. It needed a solution that improved clarity and control.

Resolution: Each field was designed with tailored optics, ensuring uniform coverage, reduced glare, and better playability. The phased installation approach minimized disruption to the school's academic and athletic schedules, delivering a seamless transition.

- ✓ **224,208 kWh/Yr**
Annual Energy Savings
- ✓ **\$16,479**
Annual Cost Savings
- ✓ **129**
Fixtures Commissioned
- ✓ **41%**
Improved Lighting Levels



Customer Review

The difference in lighting quality is night and day. Athletes feel more confident, fans enjoy a clearer view, and we're saving on costs. The upgrade has given our field a new energy.
— Athletic Director, Bolton High School



Next-Generation Stadium Illumination

Searcy School District, Arkansas, USA

Searcy School District upgraded its sports lighting across football and baseball fields to achieve uniform brightness and reduced glare. The new system improved the atmosphere for both athletes and spectators while supporting extended game schedules.

Challenge: They required a lighting solution that improved visibility and energy efficiency without disrupting field operations.

Resolution: We implemented field-specific Dynamo and Chromix fixtures with pre-engineered layouts ensuring uniformity, energy efficiency, and quick installation.

- ✓ **673,920 kWh/Yr**
Annual Energy Savings
- ✓ **\$49,533.12**
Annual Cost Savings
- ✓ **234**
Fixtures Commissioned
- ✓ **66%**
Improved Lighting Levels



Customer Review

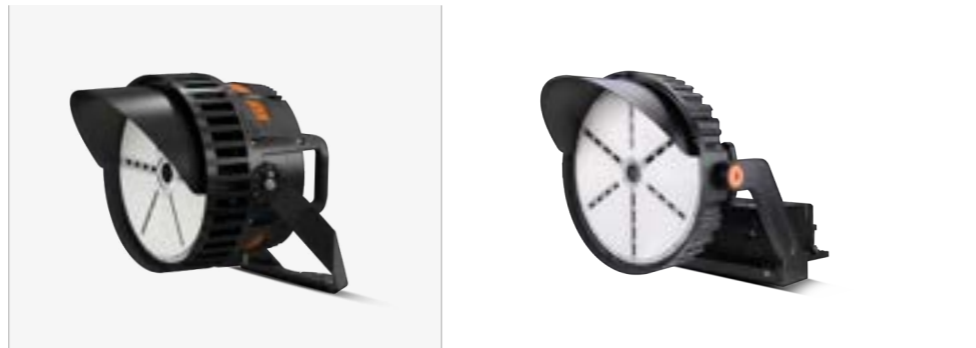
“The previous lighting made it hard to host games after dark. Now, everything is bright, clear, and uniform. The difference is night and day—literally. The new system improved visibility, safety, and the overall game atmosphere. Our fields finally meet the standard our teams and community deserve. — Facilities Director, Searcy School District”

Turn Game Days into Memorable Events



Scan to View the Video

Comprehensive Lighting Range for Every Sports Venue



	RAYDENT Stadium Flood Light	DYNAMO 4 PRO Stadium Flood Light
Driver	Integrated Driver	Remote-Controlled Driver
DMX Control Compatible	Yes	Yes
Suitable IES Standards	Class III, Class IV	Class I, Class II
Ingress Protection (IP) Rating	IP66	IP65
Unified Glare Rating (UGR)	-	-
Effective Projected Area (EPA)	3.3ft ²	3.04ft ²
Wind Shear Rating (WSR)	1.2mph	1.2 mph
Dynamic (RGBW) Capability	-	RGBW
Distribution Patterns	NEMA 3	NEMA 3, NEMA 4
Voltage	120-277V 277-480V	120-277V 277-480V
Warranty	10 Years	10 Years (Expandable Up to 25)
Fixture Design	Round	Round
Structure System	-	-
Power	750W 1000W 1200W	750W 1000W 1200W
Color Temperature (CCT)	5000K	5000K

Comprehensive Lighting Range for Every Sports Venue



	LUMINIX Stadium Flood Light	BRIGHTX Stadium Flood Light	GLAREX Stadium Flood Light
Driver	Integrated Driver	Integrated Driver	Remote-Controlled Driver
DMX Control Compatible	Yes	Yes	Yes
Suitable IES Standards	Class II, Class III	Class II, Class III	Class I, Class II
Ingress Protection (IP) Rating	IP65	IP66	IP66
Unified Glare Rating (UGR)	≤30	≤30	≤10
Effective Projected Area (EPA)	2.7ft ²	4.39ft ²	1.55 ft ²
Wind Shear Rating (WSR)	1.2 mph	1.2 mph	1.2 mph
Dynamic (RGBW) Capability	RGBW	RGBW	RGBW
Distribution Patterns	NEMA 3	NEMA 3	NEMA3, NEMA4, NEMA5
Voltage	120-277V	120-277V	100-277V 200-480V
Warranty	10 Years	10 Years	10 Years (Expandable Up to 25)
Fixture Design	Square	Square	Square
Structure System	-	-	Complete Structure System
Power	500W 600W 700W 800W	600W-700W-800W	800W 1000W 1200W
Color Temperature (CCT)	5000K	3000K 4000K 5000K 5700K	4000K 5000K

Dynamic Sports Lighting

Powered By SYNAPSE

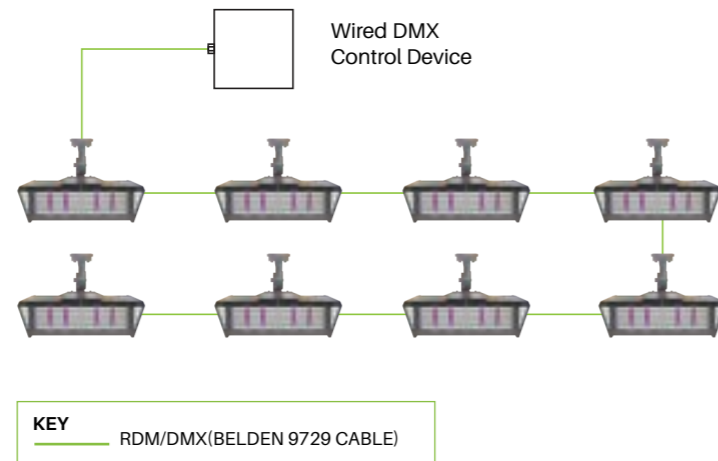
OLM systems with dynamic color-changing capabilities and real-time lighting adjustments for smooth transitions during events. Ultimately, what spectators get is a fully immersive visual atmosphere for a captivating viewing experience.



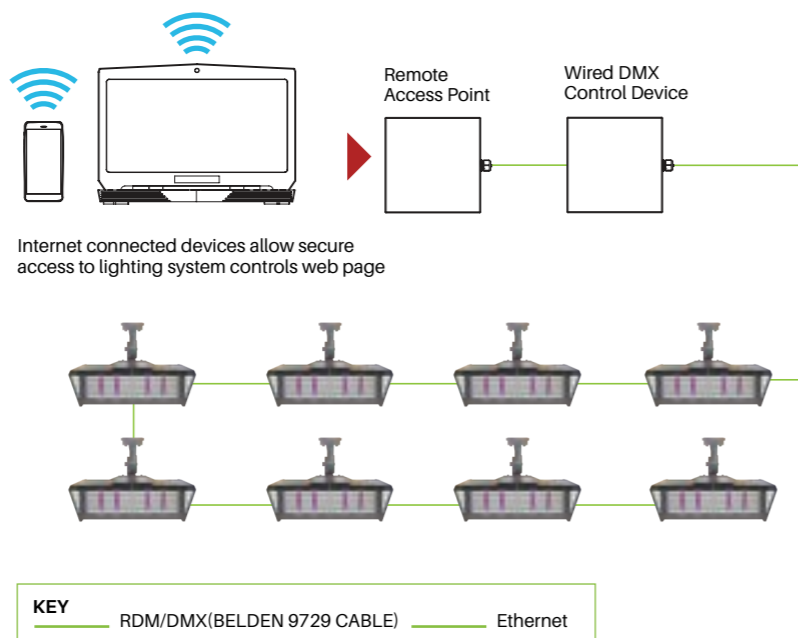
Synapse DMX Controls: Enhances the Way You Operate Field Lights

- Adjust individual fixtures, grouped lights, or the entire system from any location using a mobile device, tablet, or computer. No more phone calls to a third-party provider!
- Schedule the lights for practices, evening games, and special events.
- Get multiple preset lighting configurations to activate for special lighting needs with just a click.
- Instantly switch between static scenes for player introductions, national anthems, or halftime shows.
- Site based control with no requirement of the internet.

System Topology: Wired DMX Controls



System Topology: Remote Access Point with Wired DMX Controls VPN Gateway to DMX System Controls



4^{Step} Turnkey Solution

Experience effortlessness and efficiency in project completion like never before!

Step-1

Site Assessment & Project Scoping

- Expert-led site investigation and project scoping.
- In-depth analysis of existing lighting systems and energy usage.
- Comprehensive report generation using tools like Snapcount.

Step-2

Strategic Proposal with Customized Solutions

- Fixture selection & project visualization through advanced BIM models.
- Quantity estimation and lead time planning.
- Tailored proposal, including detailed product specifications and expert-recommended solutions.

Step-3

Final Quality Check & Direct Delivery

- Inventory undergoes Final Quality Check (FQC) before dispatch.
- Real-time updates by dedicated personnel throughout the process.
- Hassle-free, on-schedule delivery with no middlemen involved.

Step-4

Installation & Project Completion

- Professional installation by certified, trained technicians.
- Rigorous post-installation checks to verify performance standards.
- Final client feedback collected to ensure satisfaction.



Corporate Office:

8470 Allison Pointe Blvd, Suite
128 Indianapolis, IN 46250

Manufacturing & Distribution:

150 Industrial Pk Rd,
Batesville, IN 47006

(1) 844-533-4546

info@ikioledlighting.com
www.ikioledlighting.com



© 2025 IKIO LED LIGHTING. All Rights Reserved. Products and technologies in this document may be covered by one or more Patents Pending. The product images shown are for illustration purposes only and may not be an exact representation of the product. Specifications subject to change without notice.