



## Product Description

IKIO's BrightX Stadium Flood Light is a performance-driven solution engineered to meet the evolving demands of large-scale outdoor lighting. Designed for faster installs and reduced field labor, its lightweight structure is 15-20% lighter than standard sports lights, enabling quicker, safer, and easier installation. Built to support thermal stability under continuous high-output operation, BrightX maintains consistent lumen output across its lifecycle. It is purpose-built to optimize site-level efficiency through cleaner cable routing, simplified maintenance, and long-term durability, making it a dependable fit for both new stadium builds and infrastructure upgrades.

## Features

- Integrax System offers built-in electrical integration to eliminate external junction boxes and streamline on-site connections.
- Power selectability supports field-level lumen tuning, reducing SKU dependencies and ensuring on-site flexibility.
- High-strength aluminum housing with corrosion-resistant finish withstands environmental exposure and mechanical stress.
- Efficient heat dissipation architecture maintains LED performance and prolongs service life in high-output settings.
- Aerodynamic design with optimized EPA minimizes wind resistance for stable mounting in elevated or open-air environments.
- DMX control compatibility (optional) supports enhanced lighting customization across zones and scenes.
- IK10 and IP66 ratings ensure protection from impact, moisture, and dust in harsh stadium environments.

## Mounting Options

### Top Arm Mounting Bracket



### Flood Mounting Bracket

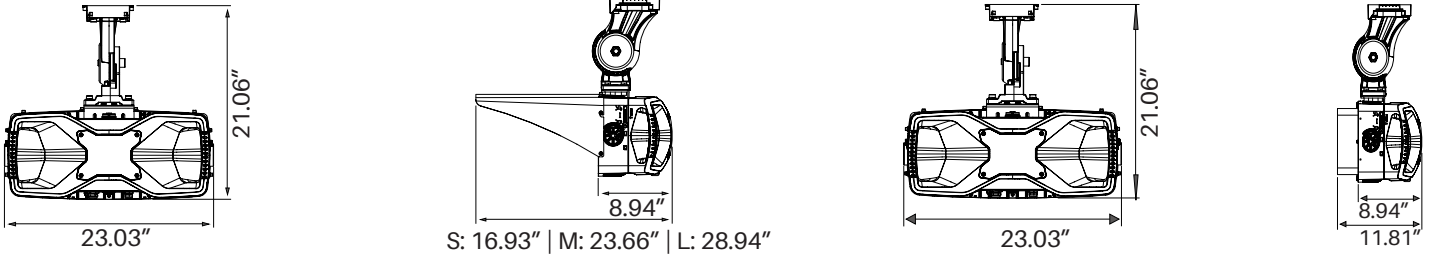


## Application Areas

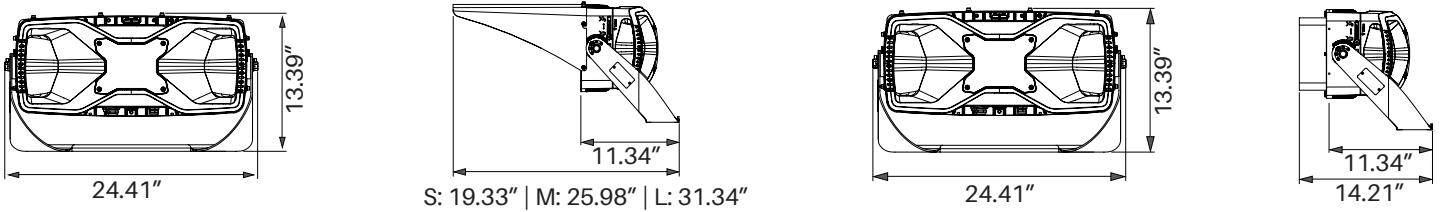
Sports & Recreational Fields, Large-scale Outdoor Events, Industrial and Construction Sites, Parking Lots and Garages, Security and Outdoor Surveillance

## Dimension Diagrams

### Top Arm Mounting Bracket



### Flood Mounting Bracket



## Product Specifications

Electrical	Power Selectable	600W-700W-800W
	Voltage	AC 100-277V (200-480V Option available)
	Power Factor	≥0.95
	Percent Flicker (%)	<1%
	Total Harmonic Distortion	≤15%
	Surge Protection	10kV (Optional: 20kV)
Lighting Performance	Lumen	90000lm-105000lm-120000lm
	Efficacy	150lm/W
	Color Temperature (CCT)	3000K   4000K   5000K   5700K
	Color Rendering Index (CRI)	70 (Optional: 80,90)
	Beam Angle	20°   40°   60°
	Dimmable Lighting Control	0-10V Dimming (Optional: DMX,DALI,Synapse)
	Protection Against Electric	Class I
Environment	Operating Temperature	-40°F ~ +122°F
	Suitable Location	<b>WET</b>
	Ingress Protection Rating (IP)	IP66
	Impact Protection Rating (IK)	IK10
Lifespan	Average Life (Hours)	100,000 (L70B50 @77°F)
	Warranty (Years)	<b>10</b>
Components	LED Light Source	Bridgelux
	Driver	Inventronic (Optional: uPowerTek, Powerland)
Construction	Housing	Die-cast Aluminum
	Lens	Polycarbonate
	Finish	Gray (Powder Coated)
	Structure	Die-casting/High Thermal Conductivity AL

## Effective Projected Area (EPA)



**Small Visor**  
3.14ft<sup>2</sup>



**Medium Visor**  
4.39ft<sup>2</sup>



**Large Visor**  
5.63ft<sup>2</sup>



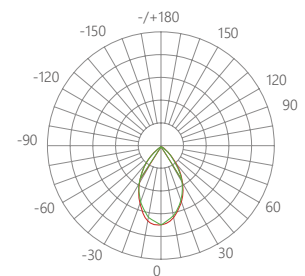
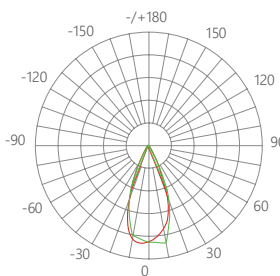
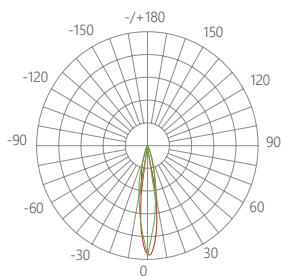
**Louver**  
2.20ft<sup>2</sup>

## Ordering Information:

Typical order example: IK-BSFL-600/700/800W-50K-MV-GR-20D-SHS-10SP-FM

FAMILY		ELECTRICAL / LIGHTING PERFORMANCE				CONSTRUCTION			
IK	BSFL				GR				
BRAND	FAMILY/ VERSION	POWER SELECTABLE* (W)	CCT (K)	VOLTAGE (V)	FINISH	BEAM ANGLE	VISOR	SURGE PROTECTION	MOUNTING OPTIONS
IK IKIO	BSFL BRIGHTX STADIUM FLOOD LIGHT	600W-700W-800W	30 3000K	MV 100-277V	GR GRAY	20D 20 DEGREE	SHS SHIELD-SMALL	10SP 10kV SURGE PROTECTION	TAM TOP ARM MOUNT BRACKET
			40 4000K	HV 200-480V		40D 40 DEGREE	SHM SHIELD-MEDIUM	20SP 20kV SURGE PROTECTION	FM FLOOD MOUNT BRACKET
			50 5000K			60D 60 DEGREE	SHL SHIELD-LARGE		
			57 5700K						

## Photometric Diagrams

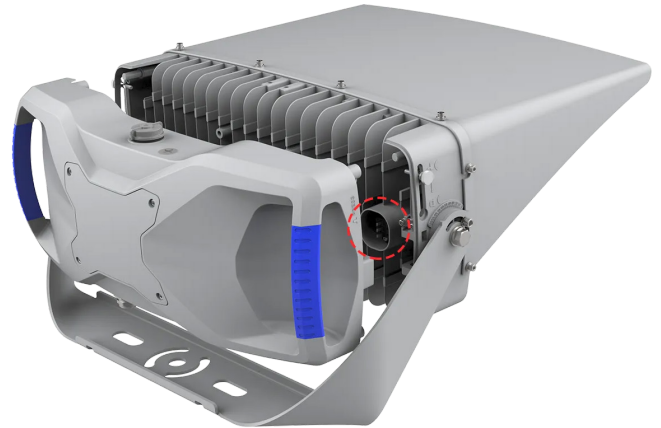


## High Efficiency & Low Cost



### Integrated Wiring Module

The fixture includes a built-in wiring compartment that doubles as the driver housing, enabling faster electrical connections and simplified commissioning. With fewer external components, the system reduces installation complexity and minimizes future maintenance steps.



### Quick-Release Locking Mechanism

A secure, tool-less locking system allows fast attachment and removal of the driver unit from the heat sink, streamlining maintenance or component replacement, especially in timesensitive environments.



### Auto-Disconnect Safety Feature

For elevated installations, the power supply automatically disconnects when the unit is opened for servicing. This built-in safety measure protects maintenance personnel by eliminating the need for manual power isolation during high-access work.

## Luminaire Exploded View

#### Visor

Visor helps to accurate light control, and dramatically reduces glare and spill.

#### Lens

High-temperature rated and high transmittance lens materials for less light loss and a long span life.

#### Heat Sink

A high thermal conductivity aluminum heat sink can quickly spread out the heat.

#### Integrax System

The integrated power supply and Integrax System can be replaced as a whole, easy to maintain.

#### Handle

The silicone handle is more comfortable, which makes the installation easier, and improves work efficiency and safety.

