



## T5 Tube - Type A

### FEATURES

- Exceptional lighting with low energy and maintenance costs.
- Great efficacy and uniform light output.
- A direct replacement for existing T5 fluorescent lighting systems.
- Unique design with a perfectly uniform visual appearance.
- These tubes are ballast compatible.

### PRODUCT DETAILS

#### LIGHTING PERFORMANCE

Efficacy	140 lm/W
Power	27 W
Lumen Output	3780 lm
CCT	4000 K, 4500 K, 5000 K
CRI	80+
Voltage	AC 100-277 V 50/60 Hz (With Ballast Use Only)
Beam Angle	300°
Power factor	≥ 0.90
Dimming	No

#### ENVIRONMENT & LIFESPAN

Operating Temperature	-13° F to +113° F
IP Rating	IP20
Operating Hours	Over 50,000 hours lifetime at L70
Warranty	5 Years

#### CONSTRUCTION

Housing	Polycarbonate
Base / Power Supply	Existing Ballast
Diffuser	Clear / Frosted

#### APPLICATIONS

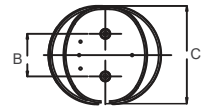
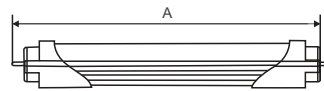
Commercial Spaces, Residential Area and Office Area.

#### QUALIFICATIONS & WARRANTY



### DIMENSIONS

Wattage	A(in)	B(in)	C(in)
27 W	48	0.50	0.68



### ORDERING INFORMATION

MODEL	POWER	CCT
IK-T504-L130	0027	40A-J
		40- 4000K
		45- 4500K
		50- 5000K

**PACKAGING**

Quantity Per Box 56

Box Dimensions -----

Box Weight -----

**OPTOMETRIC DATA**

27 W

**LUMINOUS INTENSITY DISTRIBUTION DIAGRAM**

